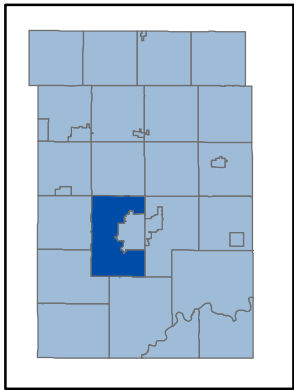
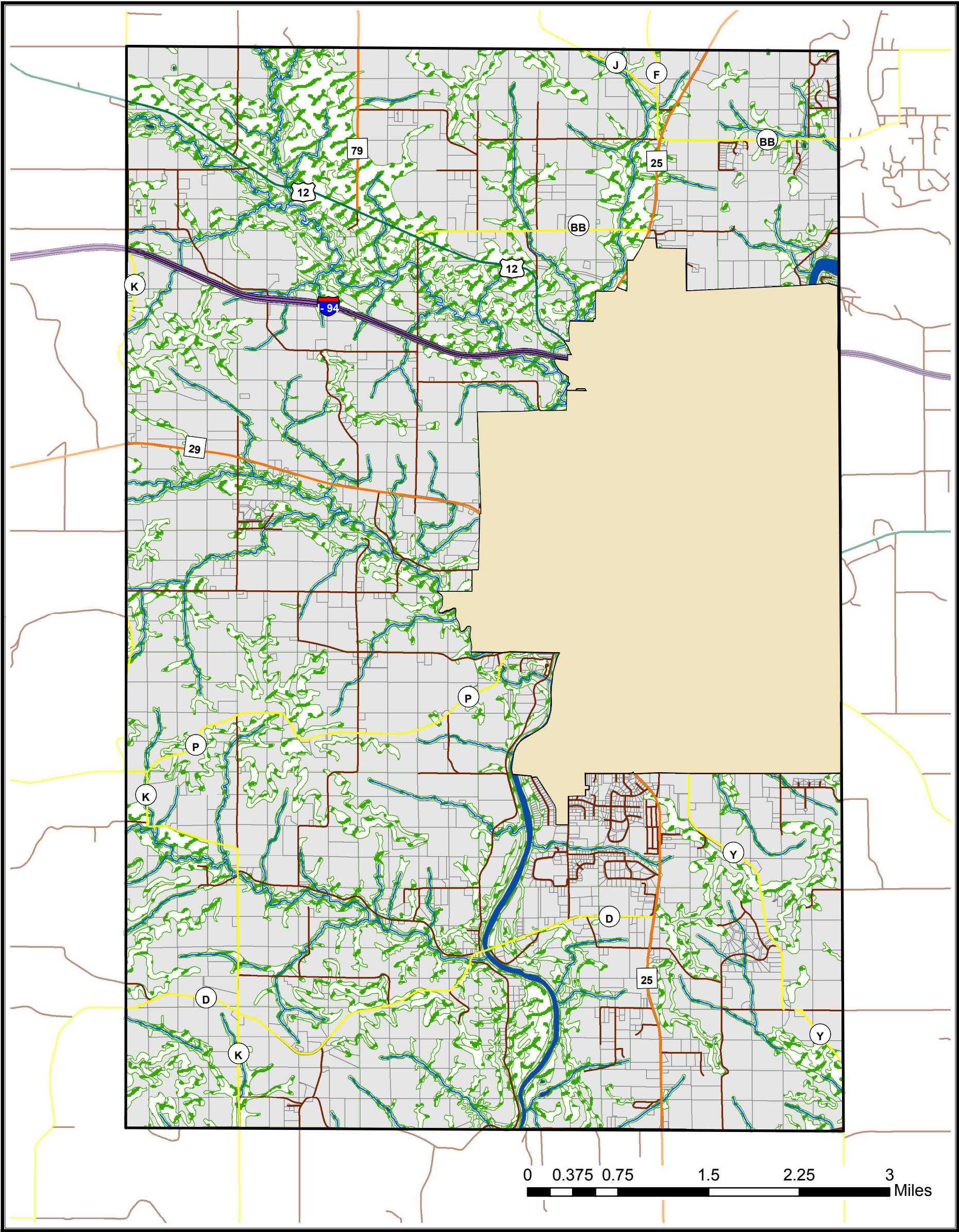


Town of Menomonie, Dunn County, Wisconsin Environmental Corridors



Dunn County

Transportation

- Interstate
- Federal
- State
- County
- Town
- Streams
- Lakes and Rivers
- Parcels
- City of Menomonie

Environmental Corridors

The layer environmental corridors is the union of hydric soils, slopes greater than 12.5%, a 75 foot stream buffer, and a 75 foot lakes and rivers buffer. The corridors also include all streams, lakes, and rivers symbolized in blue.

